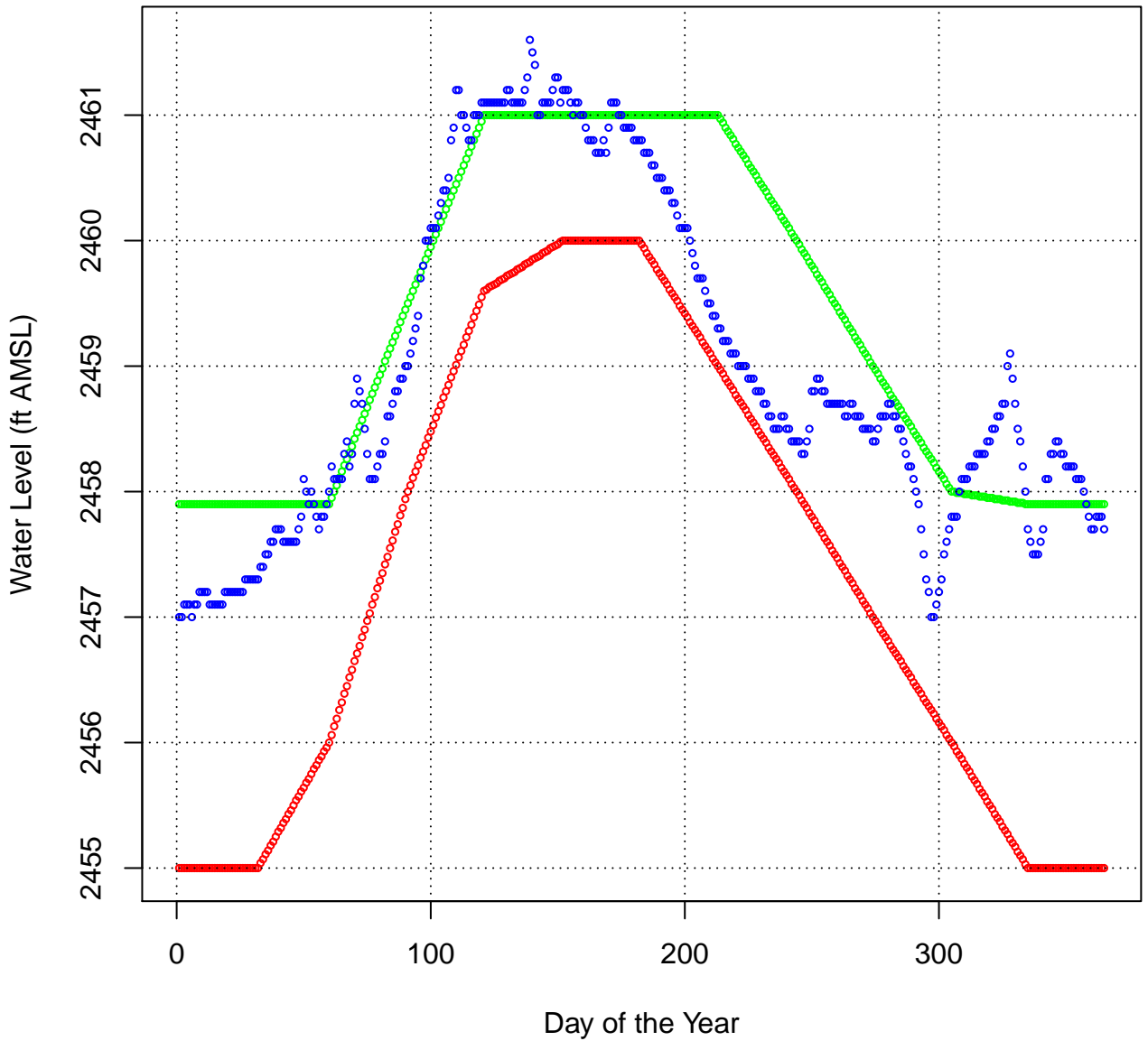
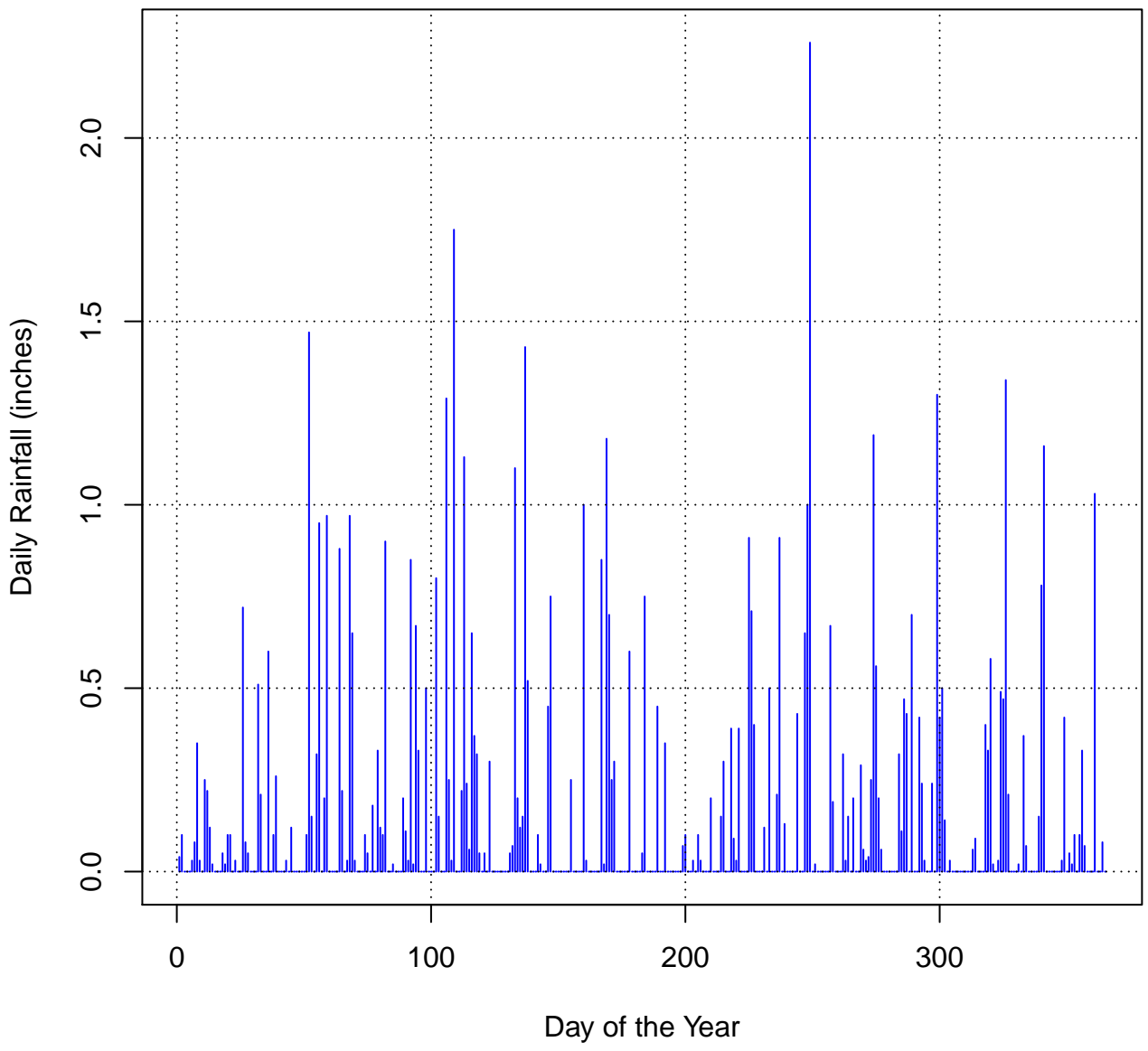


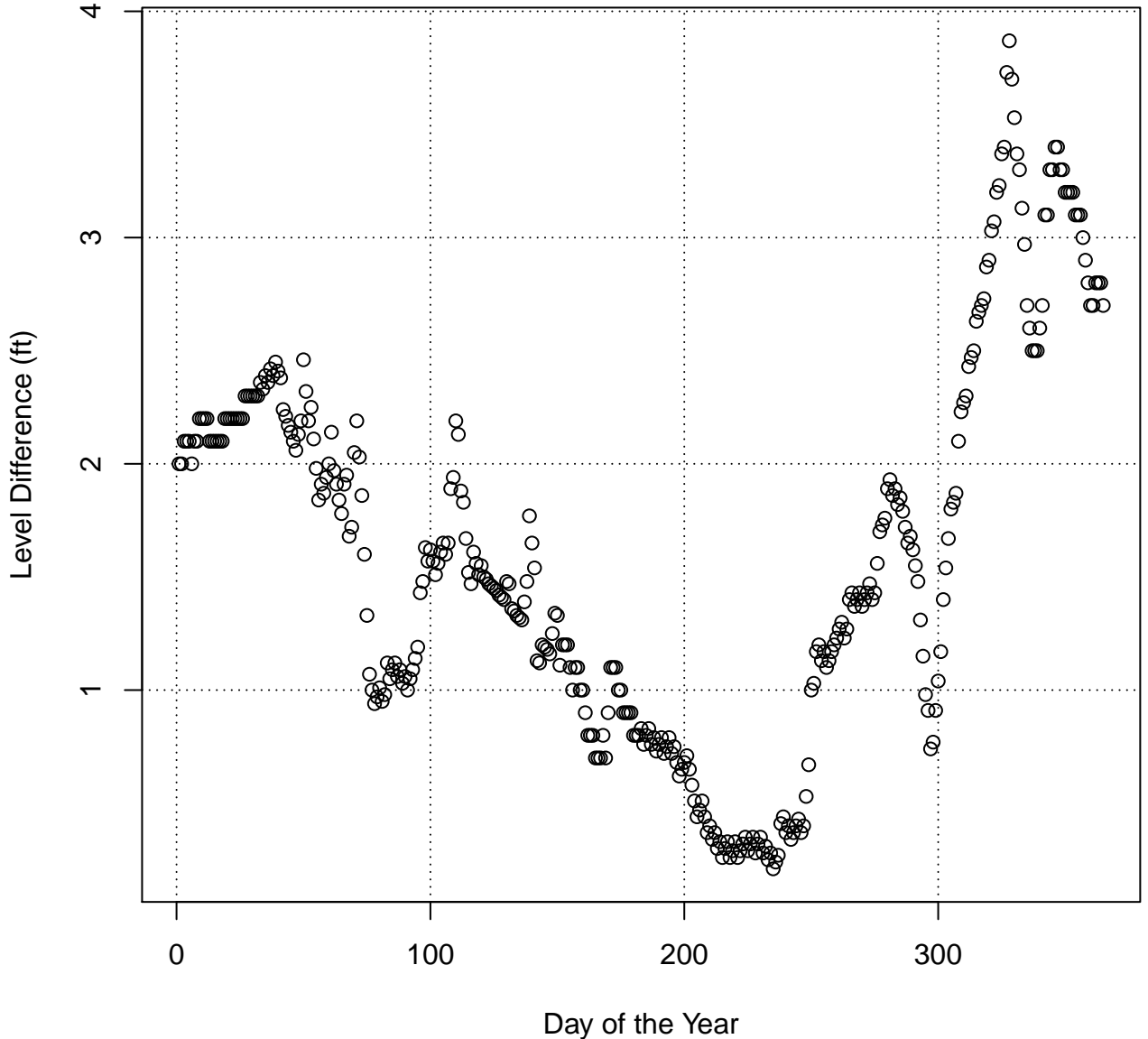
# Lake Water Levels and Rule Bands – 2011



**Daily Rainfall (inches) – 2011**  
**Total Rainfall for the Year – 63.59 inches**

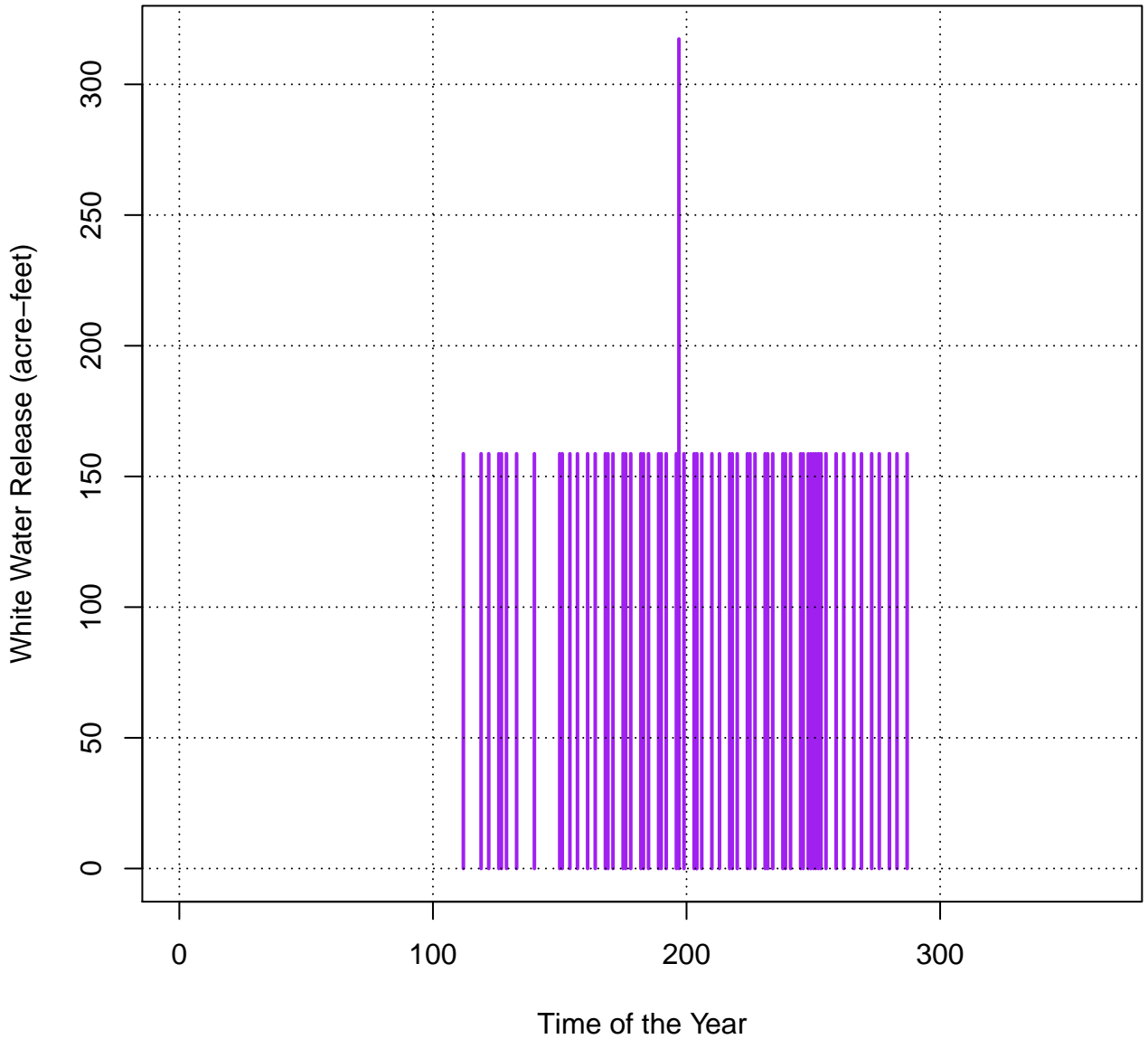


**Lake Level – Lower Rule Band (ft) – 2011**  
**Average Difference for the Year – 1.58 ft**  
**Days below lower rule band = 0**



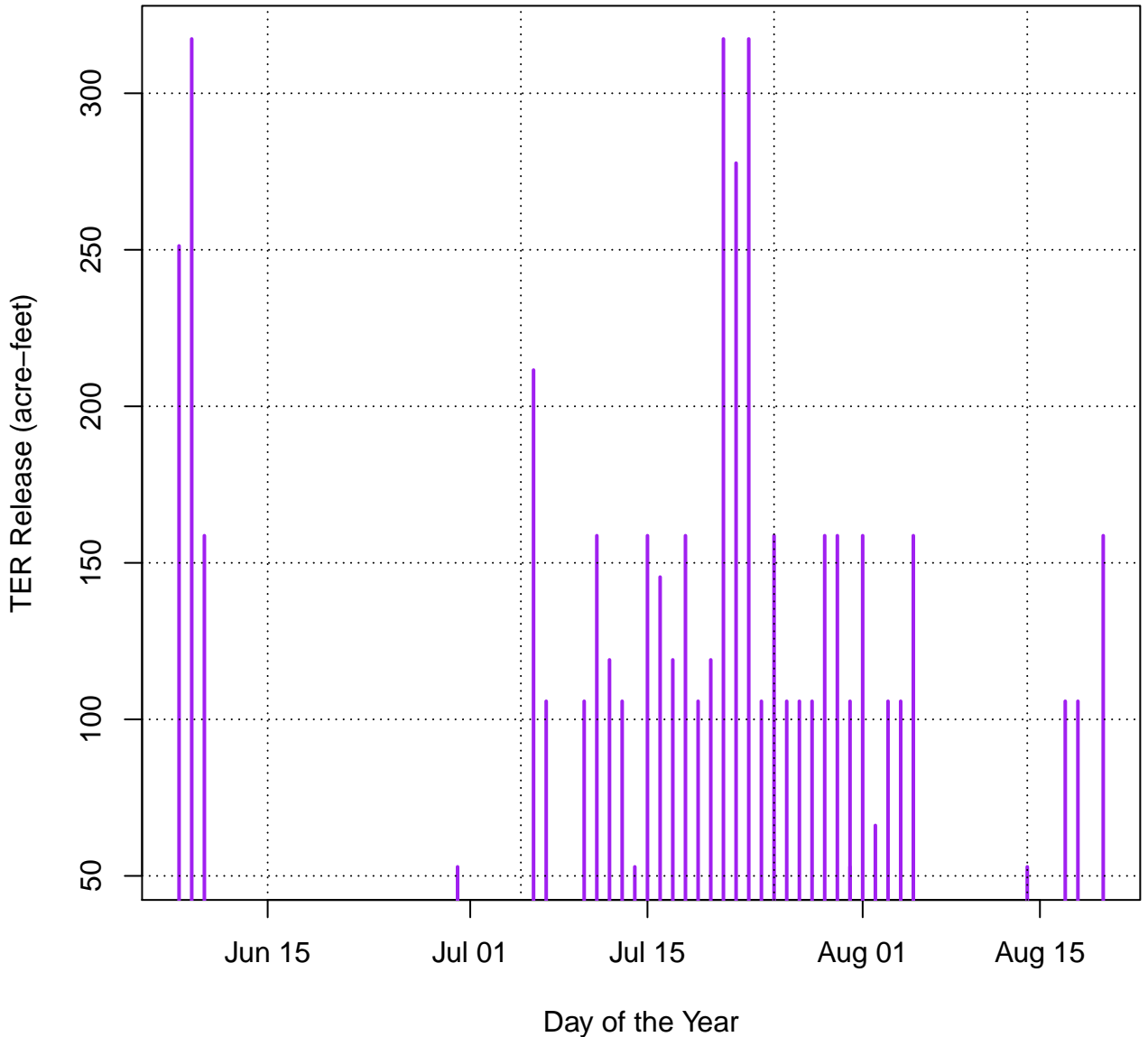
# White Water Release Schedule – 2011

Total White Water Mandatory = 10631.40 acre-feet



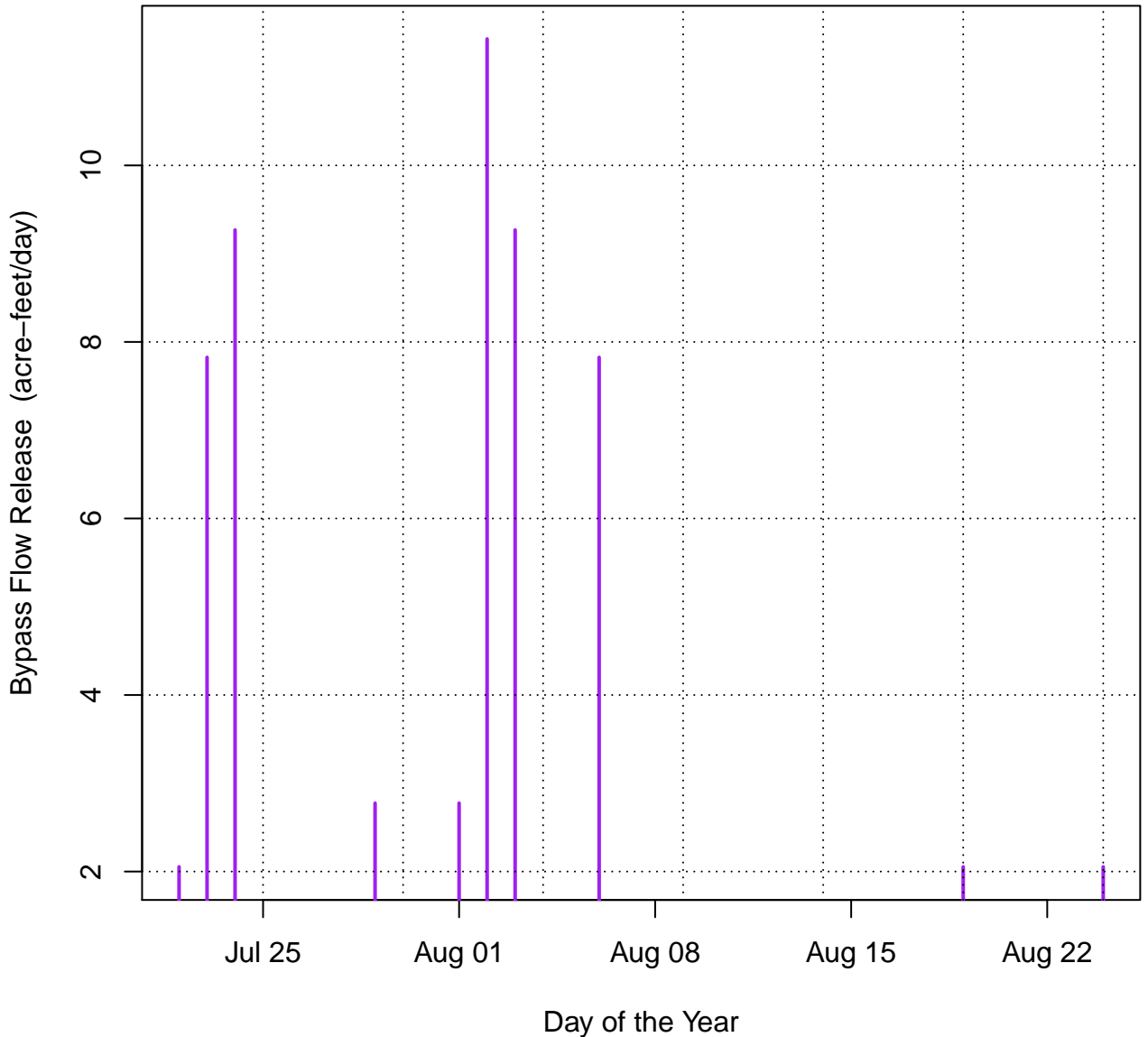
# TER Release Schedule – 2011

Total TER Releases = 5434.71 acre-feet

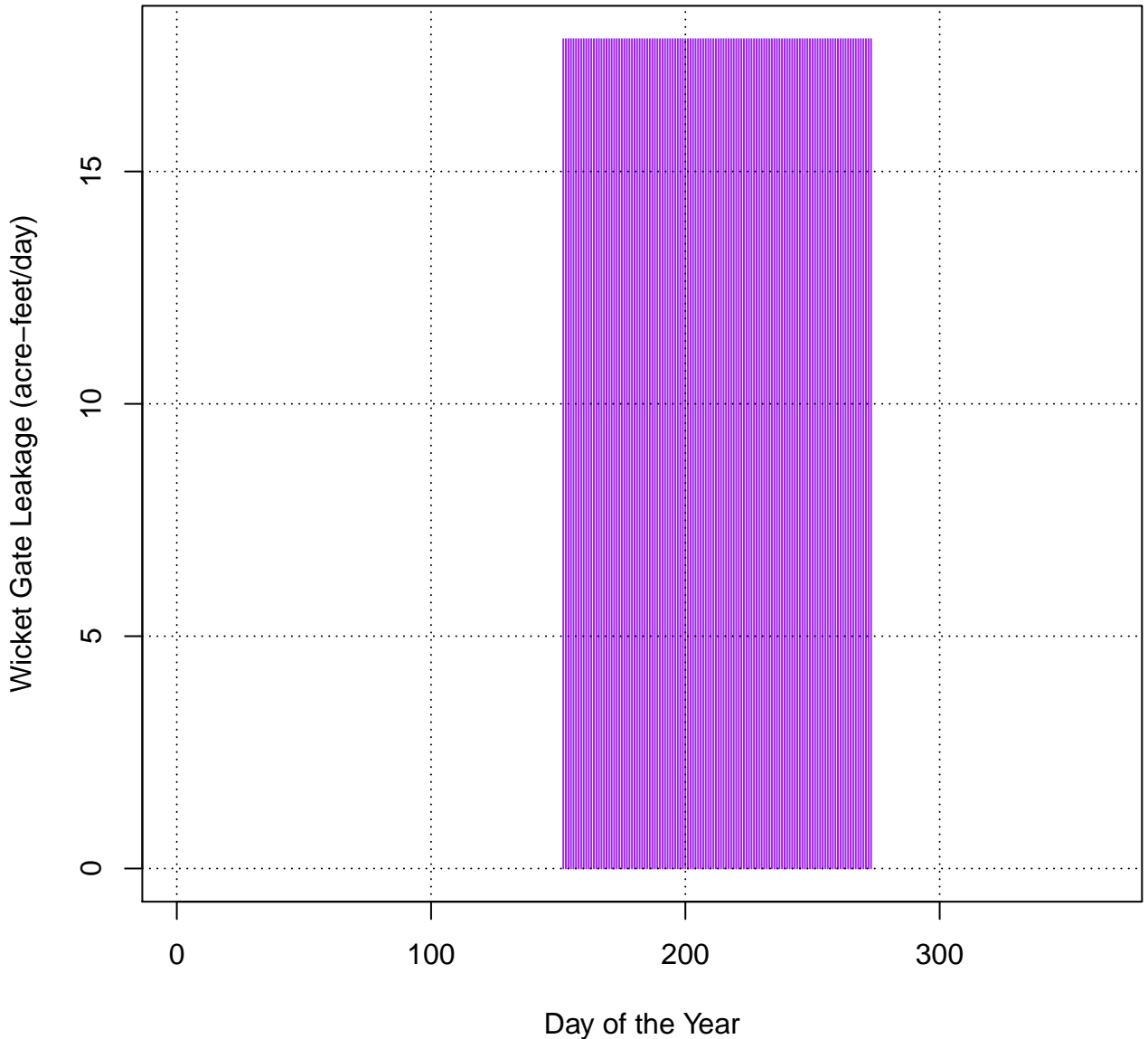


# Bypass Flow Release Schedule – 2011

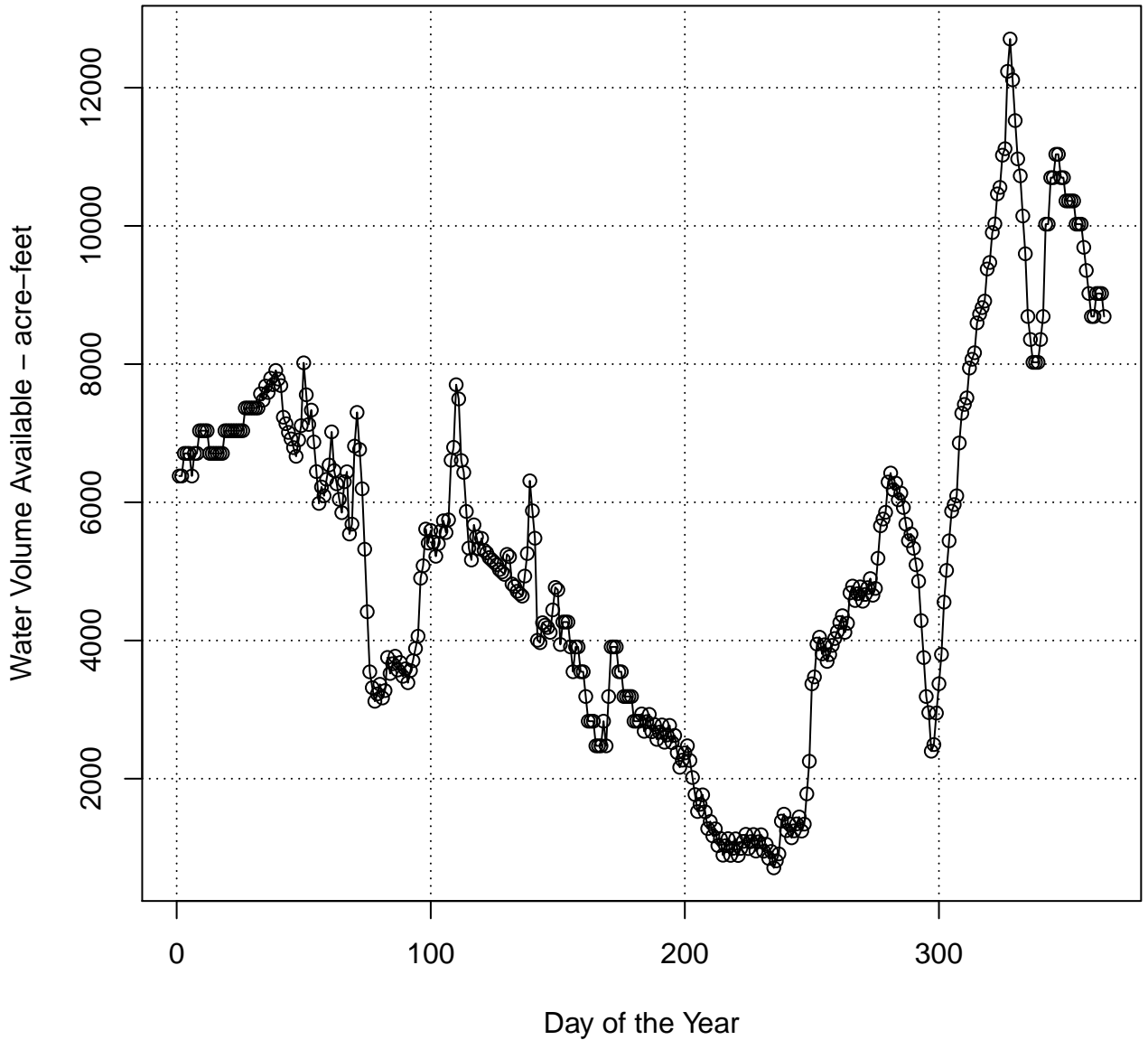
Total Bypass Release = 57.33 acre-feet



**Wicket Gate Leakage Demand – 2011**  
**Total Wicket Gate Leakage = 2177.85 acre–feet**



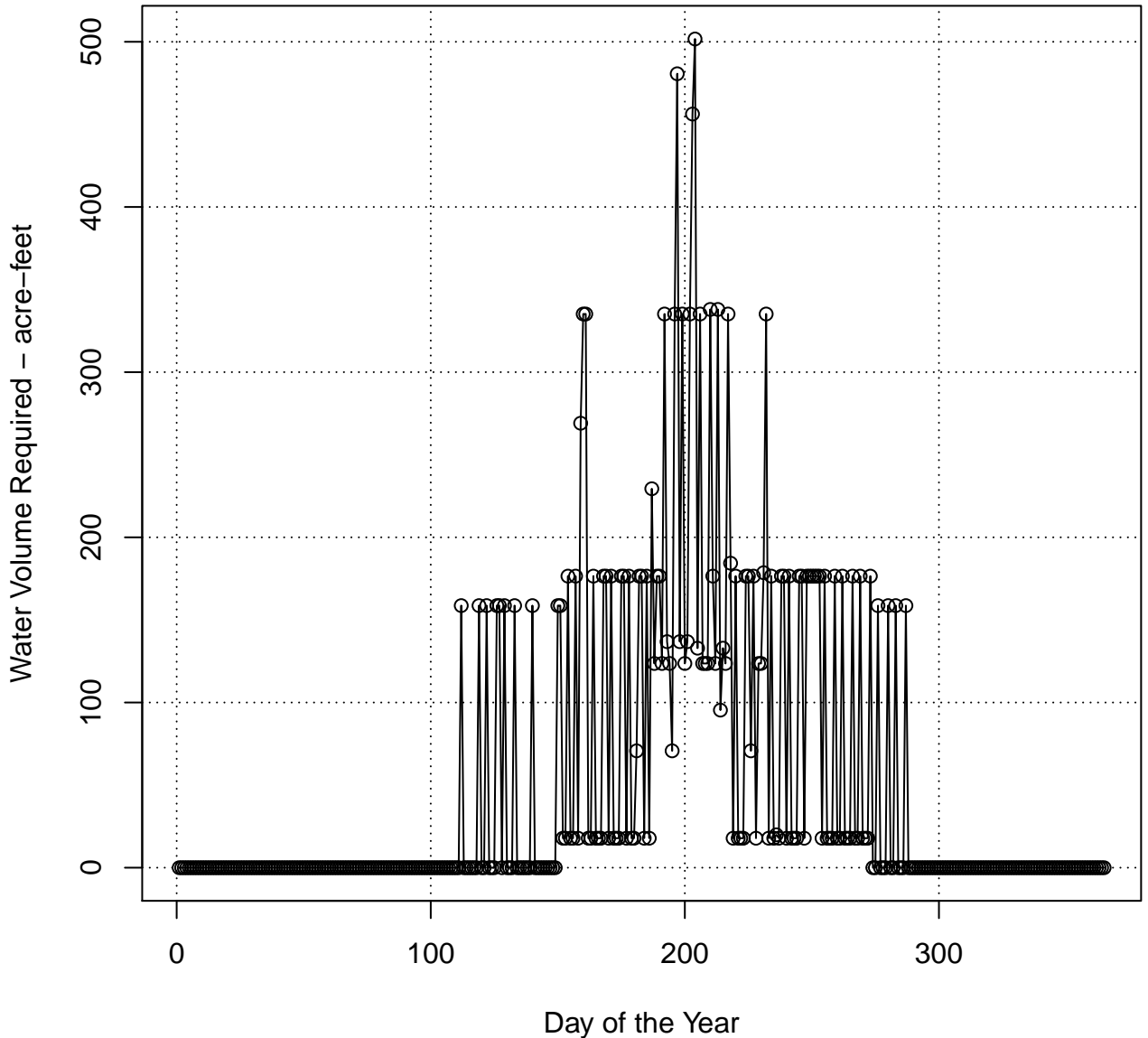
# Water Volume Available on each Day of the Year – 2011



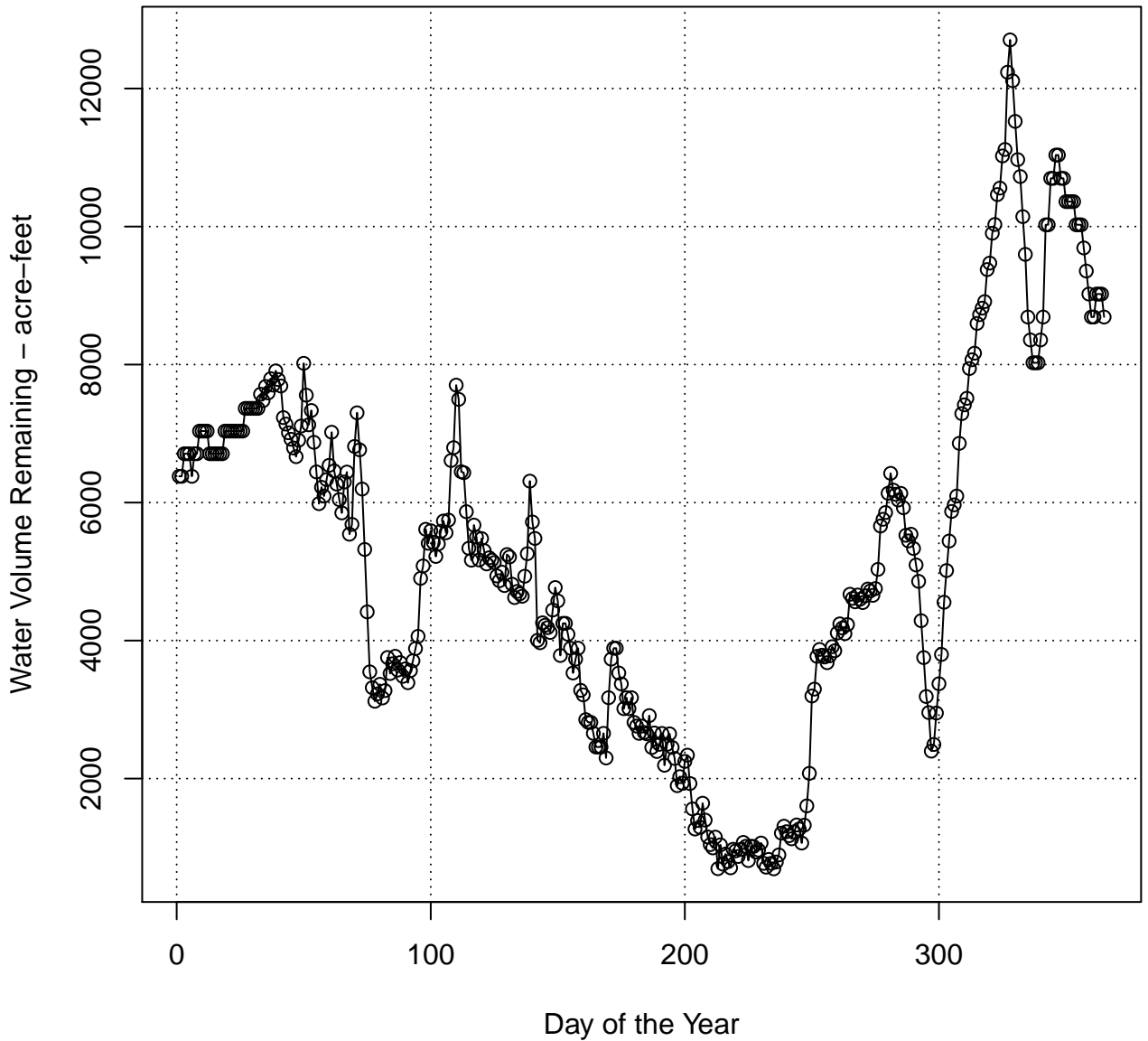


# Mandatory Volume Required on each Day of the Year – 2011

Total volume required = 17931.05 acre-feet



# Volume Remaining on each Day of the Year – 2011



# Volume on each Day of the Year – 2011

